

WEBCAST AUCTION OF AUTOMOTIVE PARTS MANUFACTURER FEATURING: (35) INJECTION MOLDERS - NEW AS 2016, (25+) ROBOTS & PICKERS - NEW AS 2016, HD WITTMANN CENTRAL DRYING SYSTEM, PORTABLE DRYERS, GRINDERS, TEMP. CONTROLLERS, COMPLETE QUALITY, TOOLROOM, MAINTENANCE DEPTS., AIR COMPRESSORS, CHILLERS & MORE - OVER 1,000 LOTS + REAL ESTATE

BidSpotter.com
 See Instructions on Page 4
 To Become a Qualified Bidder on the Internet

WEBCAST AUCTION

Facility Closed

BCS AUTOMOTIVE INTERFACE SOLUTIONS

20175 West Mill Road - Galesville, Wisconsin 54630

24 Miles North of La Crosse

SALE DATE: WEDNESDAY, FEBRUARY 22nd STARTING AT 9:00 AM CT

INSPECTION: Tuesday, February 21st from 10:00 AM to 4:00 PM CT



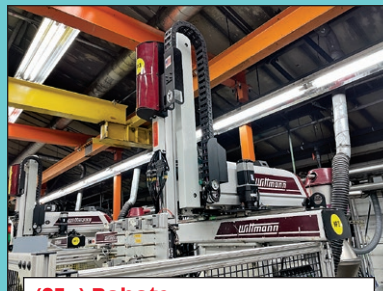
30,000 SQFT Building on 3.5 Acres



Extremely Well Maintained & Clean Plastics Facility



NEW AS 2016



(25+) Robots



AUX Equipment



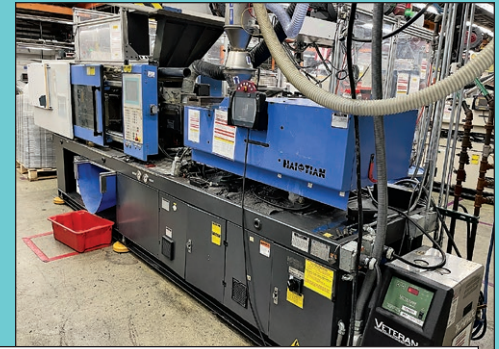
(35) Injection Molding Machines up to 280 Ton



Toolroom Department



(200+) Lots of Plant Support



(35) Injection Molding Machines by Arburg, Cincinnati Milacron, Demag, Haitian, Nissei & Toshiba up to 280 Ton – New as 2016

INJECTION MOLDING MACHINES

- 280 Ton x 38.9 Oz. Sumitomo Demag Systec 280/630-2300 IMM (New 2012)
- 250 Ton x 15.4 Oz. Toshiba EC250SXII V50-8 Electric IMM (New 2016)
- (2) 250 Ton x 15.4 Oz. Toshiba EC250SXV50-8(B) Electric IMM (New as 2015)
- 250 Ton x 12.2 Oz. Toshiba EC250SXV50-8 Electric IMM (New 2011)
- (5) 250 Ton x 11.8 Oz. Demag Ergotech 250/630-840 Concept IMM
- (2) 240 Ton x 11 Oz. Toshiba Model EC240NIIV30-6 Electric IMM (New as 2007)
- 220 Ton x 13 Oz. Cincinnati Milacron VT 220-13OZ IMM
- (4) 197 Ton x 11.8 Oz. Nissei FN4000 IMM
- 188 Ton x 10.72 Oz. Haitian HTW188 IMM
- (2) 110 Ton x 4.62 Oz. Toshiba EC110NIIV30-4 Electric IMM (New as 2008)
- (3) 88 Ton x 4.73 Oz. Haitian HTW88 IMM (New as 2006)
- (4) 85 Ton x 3.51 Oz. Cincinnati Milacron VSX 85-3.51 IMM
- (3) 55 Ton x 2.97 Oz.

- Cincinnati Milacron VSX/VS55-2.97 IMM
- (2) 55 Ton x 2.3 Oz. Arburg 320 C 500-100U Allrounder Centex IMM
- 33 Ton x 1.29 Oz. Cincinnati Milacron VSX33-1.29 IMM

ROBOTS & SPRUCE PICKERS

- (20+) Wittmann W621, W623, W723, W733, W818, W823, W833 3-Axis Robot Systems (New as 2016)
- (9) Wittmann W601, W602, W702 Pneumatic Spruce Picker (New as 2009)
- (4) KUKA KR16L6-2, KR16-KS & KR16-2KS 6-Axis Robots (New as 2013)
- Hy-Robotics Zest-200SY 3-Axis Robot (2012)
- Demag DR833-0406 Robot System (2012)

PLASTIC AUXILIARY EQUIPMENT

- Wittman DryMax E1200 Central Dryer System with (16) Hoppers & 5 Pumps (New 2013)
- (25+) Dryers by Dri-Air, Matsui & Novatec (New as 2011)
- (25+) Grinders by Autogrind, Conair, Nelmor & Wittmann
- (70+) Temp Controllers by AEC, Conair, Delta T, Sterling, Temptek & Wittmann (New as 2020)

- (20+) Gammaflux Hot Runners
- (3) NitroJection Systems
- 5,000 LB Die-Sep TT-74-10-9 Die Separator

TOOLROOM & QUALITY DEPARTMENTS

- Milltronics PI CNC Mill
- (2) Lathes by Clausing & Sheldon up to 13" x 40"
- 6" x 18" Supertec STP-618M Surface Grinder
- (2) 6" x 12" Harig Surface Grinders
- KO Lee BA960H Tool & Cutter Grinder
- EDMs, Welders, Blast Cabinets, Saws, Sanders, Grinders, Drill Presses, Tooling, Etc.
- CGI Laser Scanner Machine (New 2014)
- OPG Video Measuring Microscope System
- Large Quantity of Inspection Tools: Scales, Hardness Testers, Gauges, Surface Plates, Micrometers, Etc.

PLANT SUPPORT EQUIPMENT

- 75 HP Quincy QGV-75 Air Compressor (New 2015)
- ZEKS 500HSFA400 Air Dryer
- Bauer Compressors BV-153ED34606P-2-15DSG Verticus Nitrogen Booster (2015)

- (2) Chiller Systems by Sterlco
- GMC C6500 Box Truck & 40' Shipping Containers
- Pallet Rack & Mold Rack
- Stretch Wrapper, Floor Scrubber, Material Handling Equipment
- Large Quantity of Facility Support Equipment

REAL ESTATE AVAILABLE – CALL FOR INFO



- 30,000 SQFT Building on 3.5 Acres
- Additional 10,000 SQFT Warehouse on 1.4 Acres



(25+) Wittman Robots & Pickers & (3) KUKA Robots – New as 2013

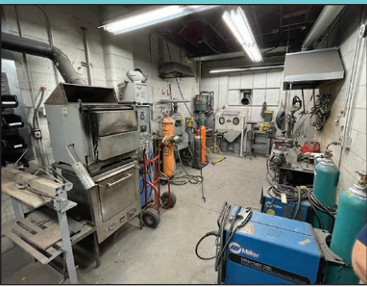


Wittman DryMax E1200 Central Dryer System with (16) Hoppers and (5) Pumps (New 2013)

Temp Controllers



Large Quantity of Plastics Auxiliary Equipment: Dryers, Grinders, Temp Units & Hot Runners



Complete Quality, Maintenance & Toolroom Departments



Large Quantity of Facility Support Equipment - Over 1,000 Lots

WEBCAST AUCTION

Facility Closed

BCS AUTOMOTIVE INTERFACE SOLUTIONS

20175 West Mill Road
Galesville, Wisconsin 54630
24 Miles North of La Crosse

SALE DATE:
Wednesday, February 22nd
STARTING: 9:00 AM CT

INSPECTION:
Tuesday, February 21st from
10:00 AM to 4:00 PM CT



CINCINNATI
INDUSTRIAL AUCTIONEERS

auctioneers | appraisers | since 1961

Contact Information
2020 Dunlap St.
Cincinnati, Ohio 45214
Phone 513-241-9701
Fax 513-241-6760
www.cia-auction.com



(35) IMMs - New as 2016



Central Dryer System



Toolroom Department



Plant Support

FIRST CLASS MAIL!

PRE-SORT
FIRST CLASS
U.S. POSTAGE
PAID
CINCINNATI, OHIO
PERMIT NO. 3593

Important Mail

TO BE DIRECTED TO THE ATTENTION
OF EXECUTIVE PERSONNEL



WEDNESDAY, FEBRUARY 22ND

WEBCAST AUCTION

Facility Closed

BCS AUTOMOTIVE INTERFACE SOLUTIONS

20175 West Mill Road
Galesville, Wisconsin 54630
24 Miles North of La Crosse

IMPORTANT NOTICE:

Although information has been obtained from sources deemed reliable, the auctioneer makes no warranty or guarantee, expressed or implied, as to the accuracy of the information herein contained. It is for this reason that buyers should avail themselves of the opportunity to make inspection prior to the sale. This brochure is intended to provide general information of the equipment being offered and is subject to errors, omissions, additions or deletions. Please check with the Auctioneer's Office for a final listing. Items offered may or may not necessarily be sold as described and/or photographed in this brochure.

BIDDER INSTRUCTIONS

> All bidders must register for this auction at www.bidspotter.com. Please register 24-hours in advance to get through approval process.



AUCTIONEERS

Cincinnati Industrial Auctioneers –
WI License No. 172-053

Jeffrey L. Luggen – WI License No. 1148-052

Joseph M. Luggen – WI License No. 2923-52



TERMS OF SALE

All equipment described herein will be sold "as is", "where is" to the highest bidder or bidders for cash in accordance with our regular terms and conditions of sale. Unless other satisfactory arrangements are made, a **25% deposit** in cash, certified or cashier's check payable to Cincinnati Industrial Auctioneers, Inc., **is required on all purchases.** Firm and personal checks accepted only if accompanied by a letter from your bank guaranteeing your funds. All sales are subject to state and/or local taxes unless a signed exemption form is presented at the time of purchase. **All balances are due at the conclusion of the sale.** No merchandise may be removed while the sale is in progress. **All bidders must comply with our Standard Terms of Sale,** copies of which will be available at the sale site or can be obtained from our website.

18% BUYERS FEE IN EFFECT FOR ALL PURCHASES



CINCINNATI
INDUSTRIAL AUCTIONEERS

auctioneers | appraisers | since 1961

Sale Under The Management Of
Cincinnati Industrial Auctioneers
2020 Dunlap St., Cincinnati, Ohio 45214
Phone 513-241-9701 Fax 513-241-6760
cia-auction.com | info@cia-auction.com

In Conjunction With



SILICON VALLEY DISPOSITION